

DISTRIBUTORE COMANDO RIBALTABILE
TIPPER CONTROL DISTRIBUTOR

montaggio al serbatoio ed al telaio
fitting to tank and chassis

CODICE DI ORDINAZIONE / ORDERING CODE

EF240 D X XXX 0

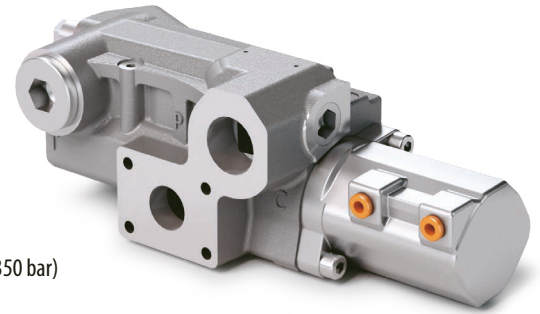
VARIANTI / VARIANTS

SINGOLA TARATURA / SINGLE SETTING = 10 ÷ 35 MPa (100 ÷ 350 bar)
(solo per la versione "1" / with version "1" only)

DOPPIA e TRIPLA TARATURA / DOUBLE and TRIPLE SETTING = vedi tabella / see table
(solo per le versioni "2" - "3" - "4" / with versions "2" - "3" - "4" only)

PER LA SINGOLA E DOPPIA TARATURA L'ULTIMA LETTERA DEL CODICE DI ORDINAZIONE È SEMPRE 0 / FOR SINGLE AND DOUBLE SETTING THE LAST LETTER OF THE ORDER CODE IS ALWAYS 0

TABELLA / TABLE	
A = 10 MPa	F = 16 MPa
B = 12 MPa	G = 17 MPa
C = 13 MPa	H = 18 MPa
D = 14 MPa	I = 19 MPa
E = 15 MPa	J = 20 MPa
K = 21 MPa	L = 22 MPa
M = 23 MPa	N = 24 MPa
P = 25 MPa	Q = 26 MPa
R = 27 MPa	S = 28 MPa
T = 29 MPa	U = 30 MPa
V = 31 MPa	W = 32 MPa
X = 33 MPa	Y = 34 MPa
Z = 35 MPa	



5

- 1 = SINGOLA TARATURA / SINGLE SETTING
- 2 = DOPPIA TARATURA MECCANICA / DOUBLE MECHANIC SETTING
- 3 = DOPPIA TARATURA PNEUMATICA / DOUBLE PNEUMATIC SETTING
- 4 = TRIPLA TARATURA MECCANICA / TRIPLE MECHANIC SETTING

D = DISTRIBUTORE / DISTRIBUTOR (comando pneumatico-doppio scarico / pneumatic control-double drainage)

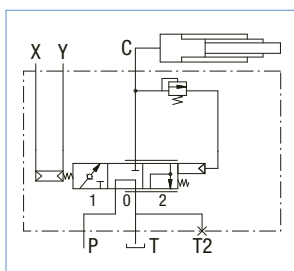
MODELLO / MODEL

CARATTERISTICHE TECNICHE / TECHNICAL SPECIFICATIONS

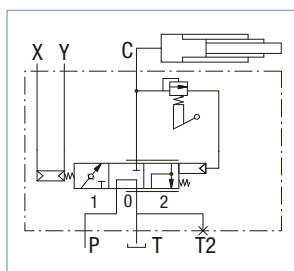
Portata nominale C>T Flow rate	130-250 l/min	Temperatura fluido °C (t) Fluid temperature °C (t)	-25° + 80°C
Pressione massima di lavoro Max working pressure	320 bar	Campo viscosità Viscosity range	12-100 cSt
Pressione massima di picco (<0.1 s) Max peak pressure	350 bar	Filtrazione / Filtering ISO 4406	20/19/16 (25 µm)
Pressione massima sul T T port max pressure	1,5 bar	Peso Weight	7.8 kg
Pressione pneumatica massima Max pneumatic pressure	10 bar	Fluido olio minerale Mineral oil	ISO VG 46
Pressione pneumatica di lavoro Pneumatic working pressure	6-7 bar	Trafilamento Leakage	100 bar = 50 ml ± 20

- Distributore a 3 vie a comando pneumatico, con valvola di non ritorno per l'azionamento di cilindri a semplice effetto.
- Posizione centrale con pompa a scarico nel serbatoio.
- Discesa progressiva.
- Valvola di massima semplice o doppia taratura a comando meccanico o pneumatico.
- Predisposto per scarico ausiliario G1" con scarico attraverso il filtro.
- Flangiabile con gruppo filtro direttamente al serbatoio.

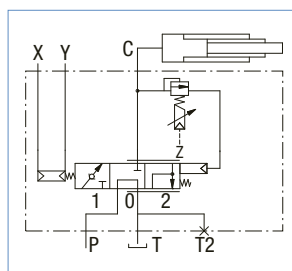
- Pneumatically controlled 3-way distributor with check valve, for operating single acting cylinders.
- Central position with pump drain into tank.
- Progressive lowering.
- Pneumatic or mechanical operated relief valve with single or double setting.
- Ready for auxiliary drainage G1" with drainage through filter.
- Flange connection with filter unit directly to tank.



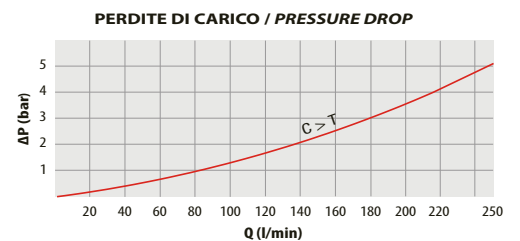
Mod. EF240 D 1



Mod. EF240 D 2 Mod. EF240 D 4



Mod. EF240 D 3



RILIEVI ESEGUITI CON OLIO ISO VG 46 A 50 °C (ν = 30 cSt)
THE ABOVE SPECIFICATIONS REFER TO OIL TYPE
ISO VG 46 AT 50 °C (ν = 30 cSt)

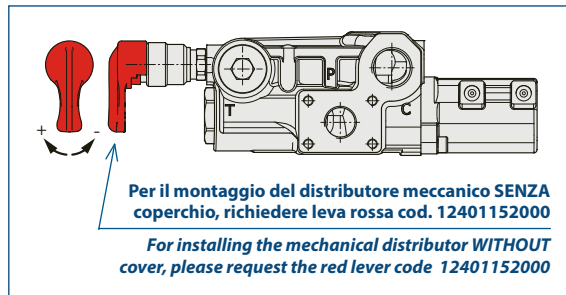
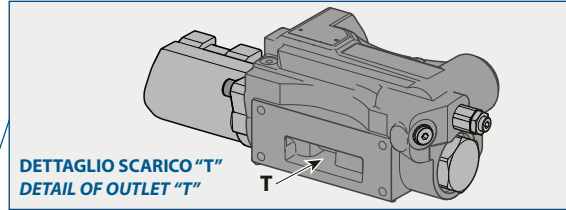
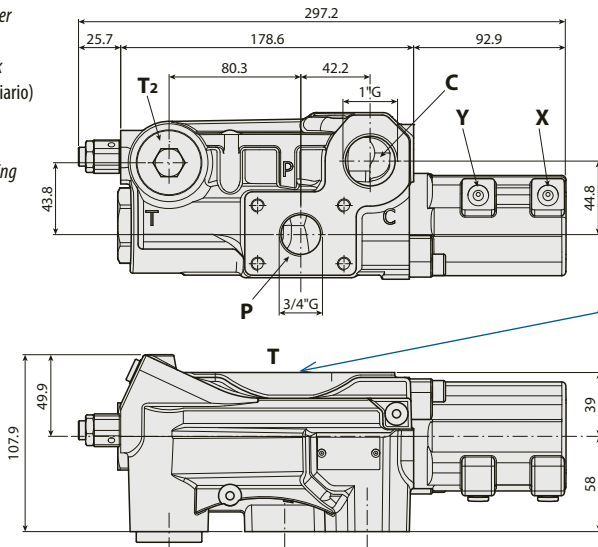
montaggio al serbatoio ed al telaio fitting to tank and chassis

DISTRIBUTORE COMANDO RIBALTABILE TIPPER CONTROL DISTRIBUTOR

VERSIONE SINGOLA TARATURA / SINGLE SETTING VERSION

mod. EF240/D 1

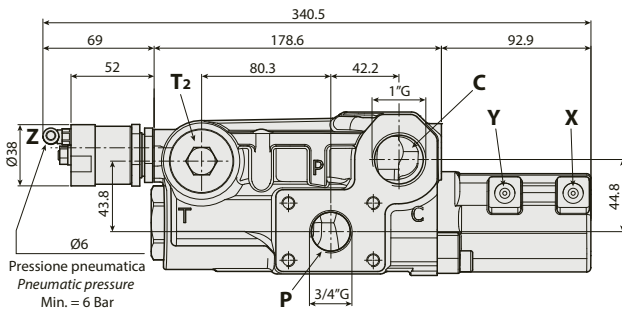
- C = Cilindro / Cylinder
- P = Pompa / Pump
- T = Serbatoio / Tank
- T₂ = Serbatoio (ausiliario)
Tank (auxiliary)
- X = Salita / Tipping
- Y = Discesa / Lowering



5

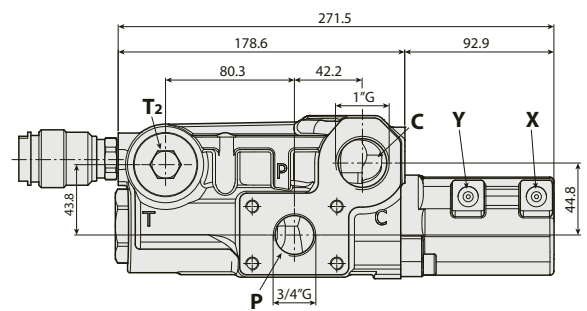
VERSIONE DOPPIA TARATURA PNEUMATICA DOUBLE PNEUMATIC SETTING VERSION

mod. EF240/D 3



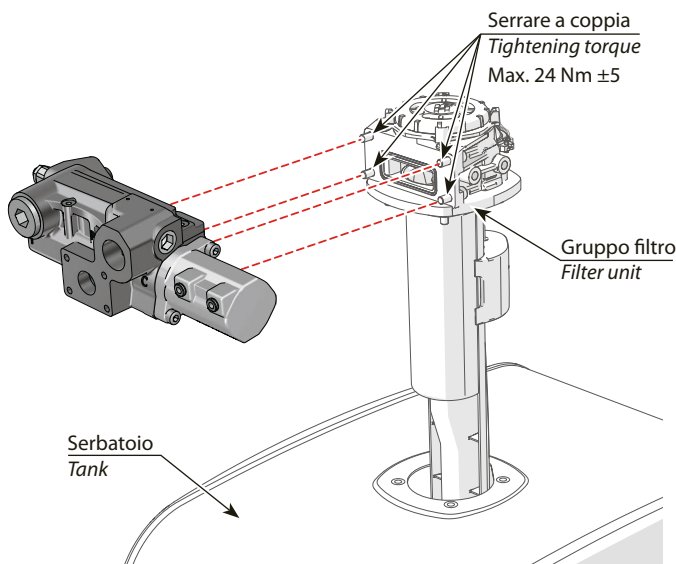
VERSIONE DOPPIA E TRIPLA TARATURA MECCANICA DOUBLE AND TRIPLE MECHANICAL SETTING VERSION

mod. EF240/D 2 - mod. EF240/D 4

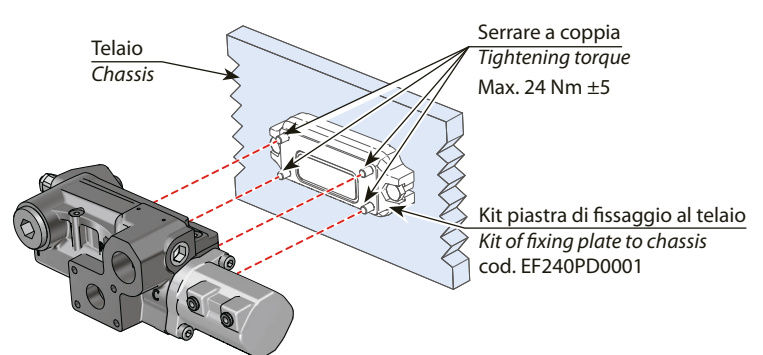


INSTALLAZIONE / INSTALLATION

MONTAGGIO SUL GRUPPO FILTRO AL SERBATOIO FITTING TO FILTER UNIT ON TANK



MONTAGGIO AL TELAI FITTING TO CHASSIS



FORI DI INSTALLAZIONE HOLES FOR FITTING

