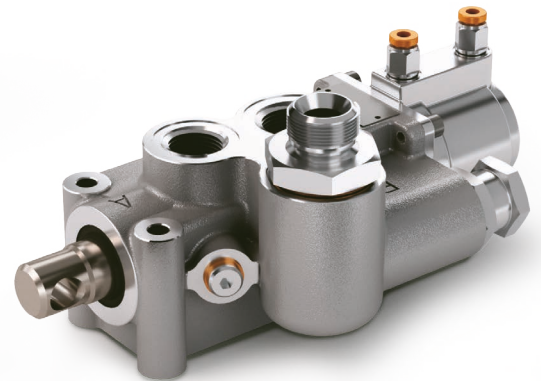


CODICE DI ORDINAZIONE / ORDERING CODE

## D150 P P XX X XX

**00** = NESSUN OPTIONAL / NO OPTIONALS  
**01** = MONTAGGIO A SERBATOIO / TANK MOUNTING  
 RACCORDO D'ENTRATA / INLET GAUGE  
**4** = 3/4" GAS (ATTACCO FEMMINA / FEMALE PORT)  
**5** = 3/4" GAS MASCHIO STANDARD / MALE STANDARD  
**6** = 1" GAS (ATTACCO FEMMINA / FEMALE PORT)  
**7** = 1" GAS (ATTACCO MASCHIO / MALE PORT)  
 TARATURA VALVOLA MASSIMA PRESSIONE / PRESSURE RELIEF VALVE SETTING  
 10 ÷ 22 MPa (100-220 bar)  
 22 ÷ 35 MPa (220-350 bar)  
 DISCESA PROGRESSIVA / PROGRESSIVE LOWERING  
 COMANDO PNEUMATICO / PNEUMATIC CONTROL  
 MODELLO / MODEL



**DM 150 P**

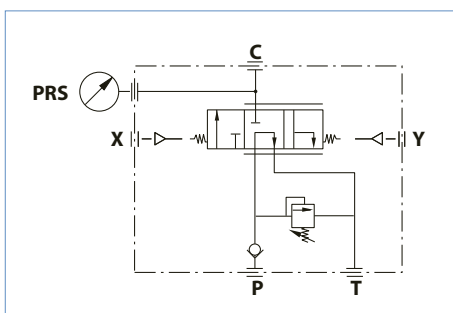
5

CARATTERISTICHE TECNICHE / TECHNICAL SPECIFICATIONS

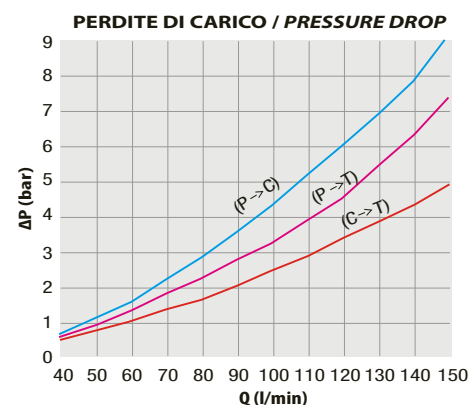
Portata nominale Flow rate	150 l/min	Temperatura fluido °C (t) Fluid temperature °C (t)	-25° + 80°C
Pressione massima di lavoro Max working pressure	250 bar	Campo viscosità Viscosity range	12-100 cSt
Pressione massima di picco (<0.1 s) Max peak pressure	300 bar	Filtrazione / Filtering ISO 4406 βx=75	20/17 25 μm
Pressione massima sul T T port max pressure	30 bar	Peso Weight	5.8 kg
Pressione pneumatica massima Max pneumatic pressure	12 bar	Fluido olio minerale Mineral oil	ISO VG 46

- Distributore da 150 l/min a comando pneumatico, per veicoli ribaltabili con sola motrice.
- Consente la salita, la discesa veloce e la discesa progressiva con comando pneumatico proporzionale.
- Sono incorporate la valvola di ritegno in ingresso e la valvola di massima pressione regolabile a richiesta 140-250 bar.
- Flangiabile a telaio.
- Attacco manometro o pressostato.

- Pneumatic operated 150 l/min distributor, for tippers without trailer.
- It performs tipping, fast lowering or progressive lowering by means of progressive pneumatic control.
- It includes inlet check valve and adjustable relief valve. The relief valve range is upon request from 140 to 250 bar.
- Flange connection to chassis.
- Upon manometer or pressure switch gauge.



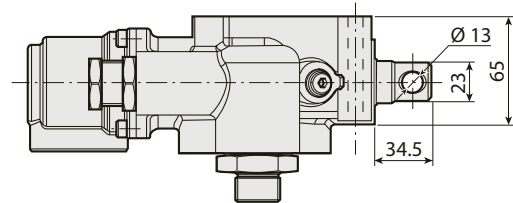
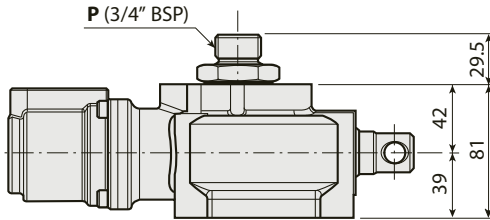
mod. DM 150 P



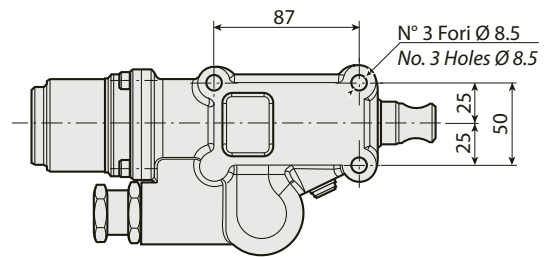
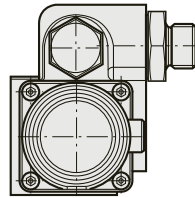
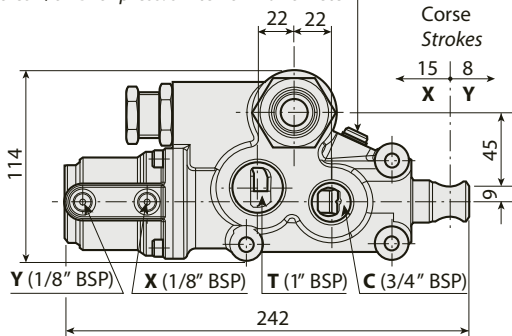
RILIEVI ESEGUITI CON OLIO ISO VG 46 A 50° C (ν<sub>7</sub> = 30 cSt)  
THE ABOVE SPECIFICATIONS REFER TO OIL TYPE ISO VG 46 AT 50° C (ν<sub>7</sub> = 30 cSt)

VERSIONE STANDARD / STANDARD VERSION  
mod. DM 150 P

**C** = Cilindro / Cylinder    **X** = Salita / Tipping  
**P** = Pompa / Pump        **Y** = Discesa / Lowering  
**T** = Serbatoio / Tank



Foro 1/8" G per pressostato o manometro  
Holes 1/8" G for press. switch or manometer



5

**PRESSOSTATO A RICHIESTA / UPON REQUEST PRESSURE SWITCH**

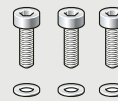
Coppia di serraggio / Tightening torque: 30 ± 5 Nm

Pressostato 3 bar per pressioni di lavoro < 160 bar  
Pressure switch at 3 bar for working pressure < 160 bar      COD. 501PRS163A1

Pressostato 7 bar per pressioni di lavoro > 160 bar  
Pressure switch at 7 bar for working pressure > 160 bar      COD. 501PRS357A1

**KIT PER FISSAGGIO AL TELAIO / CHASSIS MOUNTING KIT**

**M8x80**



Serrare a coppia max 20 Nm ± 5  
Tightening torque max 20 Nm ± 5

Montare con frenafletti 243  
Assembly using threadlocker 243

COD. 30KFD004000

**CAMPI DI REGOLAZIONE VALVOLA DI MASSIMA**  
**ADJUSTMENT RANGES FOR RELIEF VALVE**

140 ÷ 240 bar

240 ÷ 350 bar

**KIT GUARNIZIONI / SEALS KIT**

COD. 39200028000