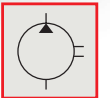
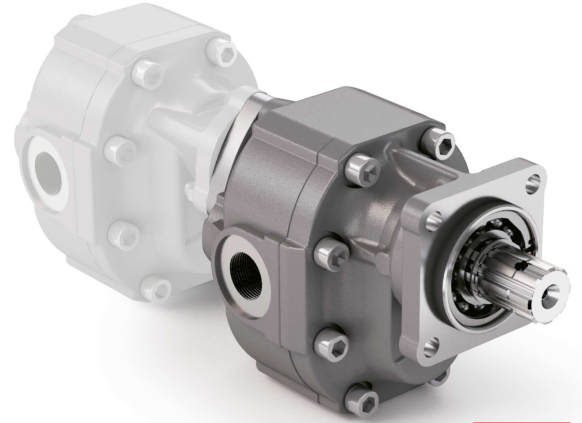


1 TANDEM ISO 14 (DIN 5462)

CODICE DI ORDINAZIONE / ORDERING CODE

20 FZH XXX X S X 0 0 T



T = PREDISPOSTA TANDEM
SUITABLE FOR TANDEM

ACCESSORI / ACCESSORIES
0 = NESSUNO / NONE

VARIANTI / VARIANTS
0 = NESSUNA / NONE

GUARNIZIONI / GASKETS
0 = NBR (standard)
H = HNBR (a richiesta / on request)
V = VITON (a richiesta / on request)

ALBERO / SHAFT
S = ISO 14 (DIN 5462)

ROTAZIONE / ROTATION
D = DESTRA / CLOCKWISE
S = SINISTRA / ANTICLOCKWISE

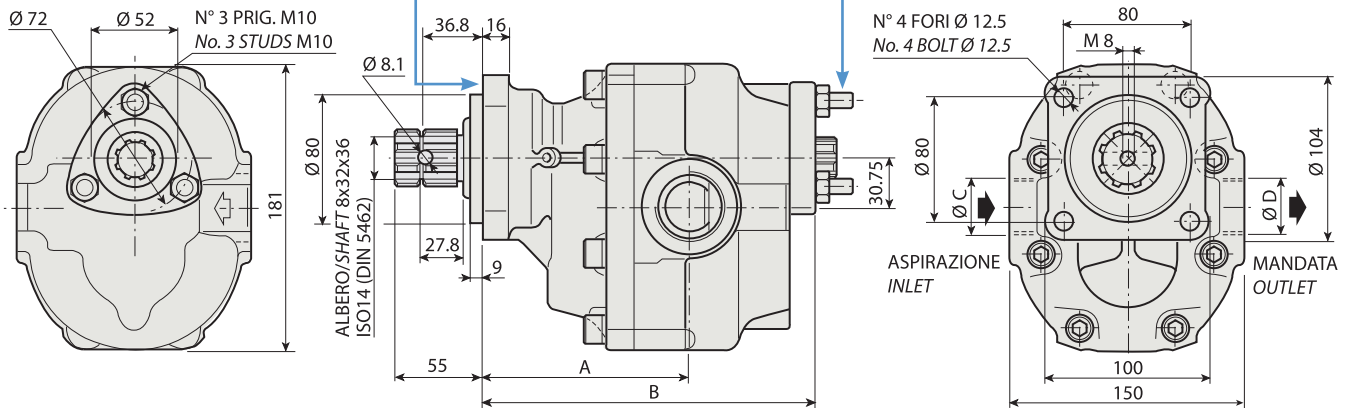
CILINDRATA / DISPLACEMENT

TIPO / TYPE

POMPA AD INGRANAGGI / GEAR PUMP

FZH 62 V	FZH 85 V	FZH 116 V	FZH 150 V
FZH 75 V	FZH 100 V	FZH 130 V	

KIT ACCOPPIAMENTO COUPLING KIT	FZ0	198KPP09000000
198KPP04000000		
KIT ACCOPPIAMENTO POSTERIORE: per pompe ad ingranaggi tipo	BPS	198KPP10000000
REAR MOUNTING KIT: for gear pumps type		



CARATTERISTICHE E DATI TECNICI / SPECIFICATIONS AND TECHNICAL DATA

TIPO TYPE	CODICE / CODE		CILINDRATA DISPLACEMENT cm ³ /rev.	A mm	B mm	C ASPIRAZIONE INLET	D MANDATA OUTLET	PESO WEIGHT kg
	ROTAZIONE DESTRA CLOCKWISE ROT.	ROTAZIONE SINISTRA ANTICLOCKWISE ROT.						
FZH 62 V	20FZH062DSX00T	20FZH062SSX00T	62	125.5	201.0	1" G	3/4" G	17.6
FZH 75 V	20FZH075DSX00T	20FZH075SSX00T	73	127.5	205.0	1" 1/4 G	1" G	18.5
FZH 85 V	20FZH085DSX00T	20FZH085SSX00T	84	130.0	209.0	1" 1/4 G	1" G	19.4
FZH 100 V	20FZH100DSX00T	20FZH100SSX00T	100	139.5	215.0	1" 1/4 G	1" G	20.3
FZH 116 V	20FZH116DSX00T	20FZH116SSX00T	116	139.5	221.0	1" 1/4 G	1" G	21.2
FZH 130 V	20FZH130DSX00T	20FZH130SSX00T	132	135.5	227.0	1" 1/2 G	1" G	22.1
FZH 150 V	20FZH150DSX00T	20FZH150SSX00T	148	143.5	233.0	1" 1/2 G	1" G	23.0

KIT RASAMENTI / THRUST PLATES KIT COD. 2H451075000000 - KIT GUARNIZIONI COMPLETO NBR (standard) / COMPLETE SEALS KIT NBR (standard) COD. 21901500000000

Per la scelta dei raccordi orientabili vedi pag. <?>-<?> / For the selection of adjustable fittings see page <?>-<?>

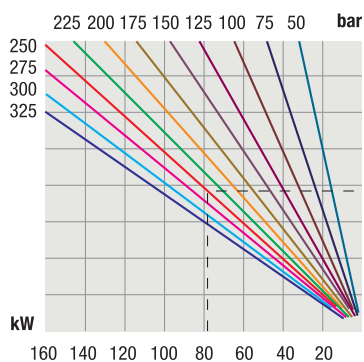
TANDEM ISO 14 (DIN 5462)

1

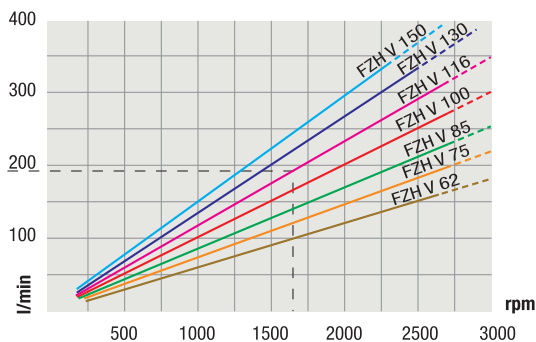
TIPO / TYPE		FZH 62 V	FZH 75 V	FZH 85 V	FZH 100 V	FZH 116 V	FZH 130 V	FZH 150 V
Cilindrata Displacement	Vg cm ³ /n cm ³ /rev.	62	73	84	100	116	132	148
Pressione massima continua Max continuous operating pressure	P1	300	300	270	260	250	230	190
Pressione massima intermittente Max intermittent operating pressure	(max 30 s) P2	350	320	310	290	280	270	230
Pressione massima di picco Max peak pressure	(≤ 0.1 s) P3	450	450	375	375	340	315	270
Velocità massima intermittente Max intermittent speed	(P ≤ 20 bar) n3	3800	3800	3500	3500	3000	3000	3000
Velocità massima continua Max continuous speed	(≤ P1) n1	2000	1800	1800	1500	1500	1500	1500
Velocità minima intermittente Min intermittent speed	(≤ P2 x 0.5) (max 30 s) n4	400	300	300	250	250	250	250

DIAGRAMMI / DIAGRAMS

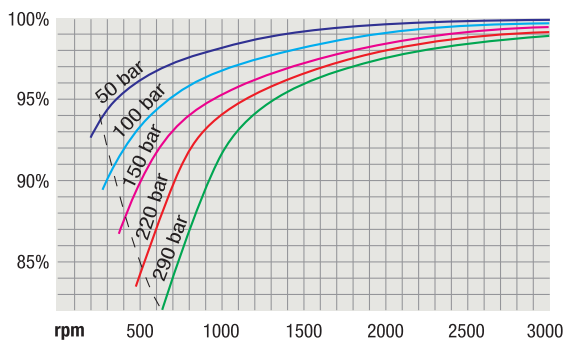
**POTENZA ASSORBITA
POWER INPUT**



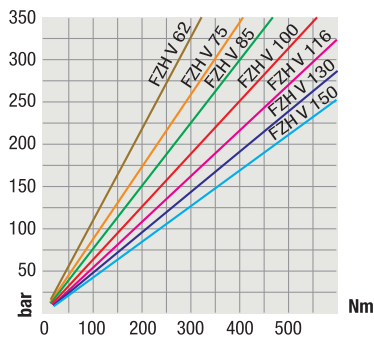
**PORTATA
CAPACITY**



**RENDIMENTO VOLUMETRICO
VOLUMETRIC EFFICIENCY**



**COPPIA ASSORBITA
DRIVE TORQUE**



RILIEVI ESEGUITI CON OLIO ISO VG 46 A 50° C ($\nu = 30$ cSt)
THE ABOVE SPECIFICATIONS REFER TO OIL TYPE ISO VG 46 AT 50° C ($\nu = 30$ cSt)