

2 ISO 14 (DIN 5462)

CODICE DI ORDINAZIONE / ORDERING CODE

22 PEH XXX 0 S X 0 0 0

CILINDRATA / DISPLACEMENT
0 = SINGOLA / SINGLE

ACCESSORI / ACCESSORIES
0 = NESSUNO / NONE

VARIANTI / VARIANTS
0 = NESSUNA / NONE

GUARNIZIONI / GASKETS
0 = NBR (standard)
H = HNBR (a richiesta / on request)
V = VITON (a richiesta / on request)

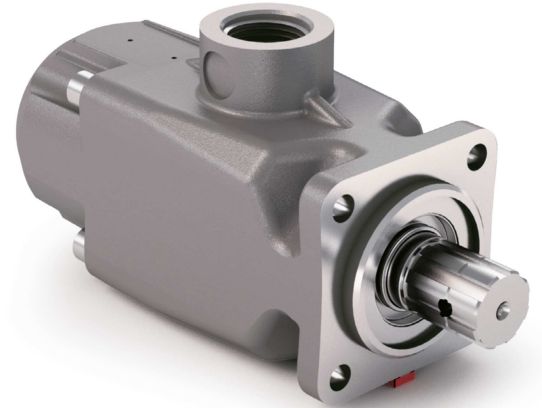
ALBERO / SHAFT
S = ISO 14 (DIN 5462)

ROTAZIONE / ROTATION
0 = BIDIREZIONALE / BIDIRECTIONAL

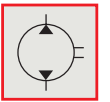
CILINDRATA / DISPLACEMENT

TIPO / TYPE

POMPA A PISTONI / PISTON PUMP



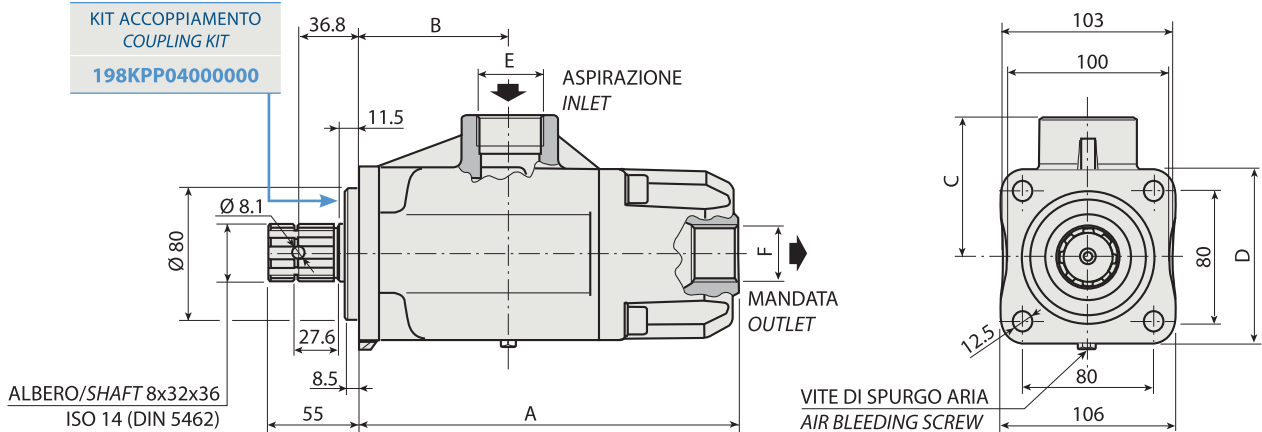
BIDIREZIONALE
BI-ROTATIONAL



PE H 40

PE H 50

PE H 60



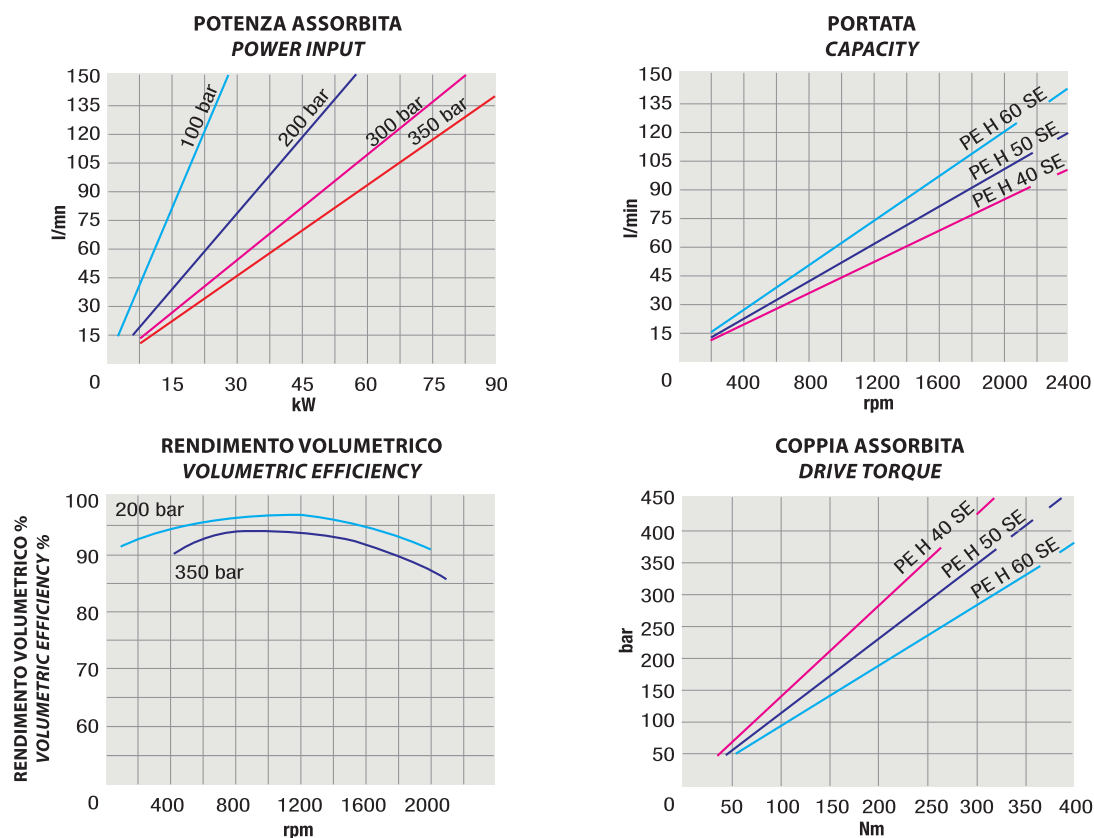
CARATTERISTICHE E DATI TECNICI / SPECIFICATIONS AND TECHNICAL DATA

TIPO TYPE	CODICE CODE	A mm	B mm	C mm	D mm	E ASPIRAZIONE INLET	F MANDATA OUTLET	PESO WEIGHT kg
PE H 40	22PEH0400SX000							
PE H 50	22PEH0500SX000	232.5	945	85	106	1" 1/4 G	1" G	10.6
PE H 60	22PEH0600SX000							

KIT GUARNIZIONI COMPLETO NBR (standard) / COMPLETE SEALS KIT NBR (standard) COD. 21900100000000

Per la scelta dei raccordi orientabili vedi pag. <?>-<?> / For the selection of adjustable fittings see page <?>-<?>

TIPO / TYPE		PE H 40	PE H 50	PE H 60
Cilindrata <i>Displacement</i>	Vg cm ³ /n cm ³ /rev.	40	50	60
Pressione massima continua <i>Max continuous operating pressure</i>	P1	400	330	290
Pressione massima intermittente <i>Max intermittent operating pressure</i>	(max 30 s) P2	430	360	340
Pressione massima di picco <i>Max peak pressure</i>	(≤ 0.1 s) P3	500	500	400
Velocità massima intermittente <i>Max intermittent speed</i>	(P ≤ 20 bar) n3	2400	2400	2100
Velocità massima continua <i>Max continuous speed</i>	(≤ P1) n1	1800	1800	1700
Velocità minima intermittente <i>Min intermittent speed</i>	(≤ P2 x 0.5) (max 30 s) n4	400	400	300

DIAGRAMMI / DIAGRAMS

 RILIEVI ESEGUITI CON OLIO ISO VG 46 A 50° C ($\nu = 30$ cSt)

 THE ABOVE SPECIFICATIONS REFER TO OIL TYPE ISO VG 46 AT 50° C ($\nu = 30$ cSt)