

1 ISO 14 (DIN 5462)

CODICE DI ORDINAZIONE / ORDERING CODE

20 HPS XXX X S X 0 0 0

0 = SINGOLA / SINGLE

ACCESSORI / ACCESSORIES
0 = NESSUNO / NONE

VARIANTI / VARIANTS
0 = NESSUNA / NONE

GUARNIZIONI / GASKETS
0 = NBR (standard)
H = HNBR (a richiesta / on request)
V = VITON (a richiesta / on request)

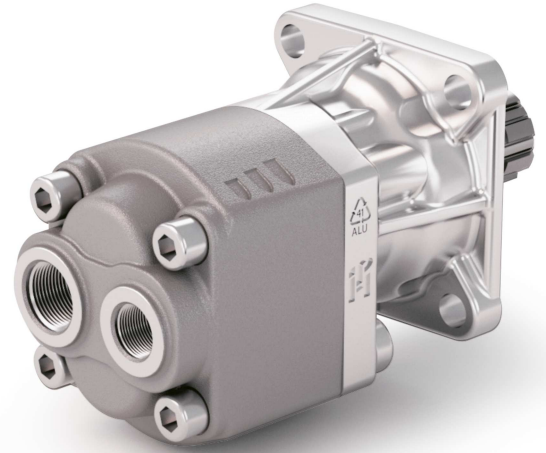
ALBERO / SHAFT
S = ISO 14 (DIN 5462)

ROTAZIONE / ROTATION
D = DESTRA / CLOCKWISE
S = SINISTRA / ANTICLOCKWISE

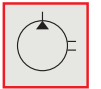
CILINDRATA / DISPLACEMENT

TIPO / TYPE

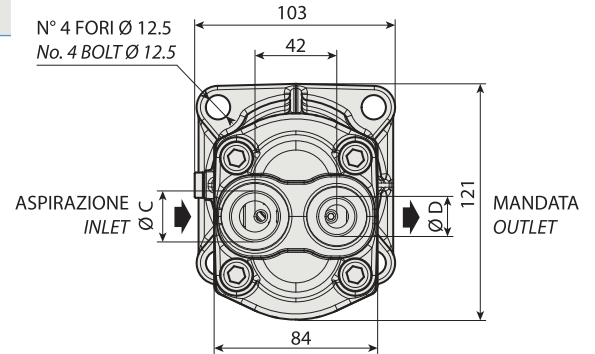
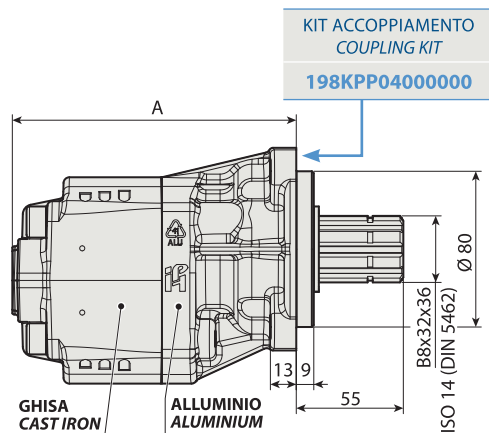
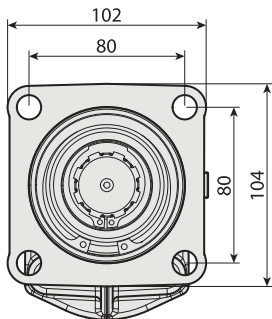
POMPA AD INGRANAGGI / GEAR PUMP



**MONODIREZIONALE
MONO-ROTATIONAL**



HPS 08	HPS 13	HPS 22
HPS 11	HPS 16	HPS 25



CARATTERISTICHE E DATI TECNICI / SPECIFICATIONS AND TECHNICAL DATA

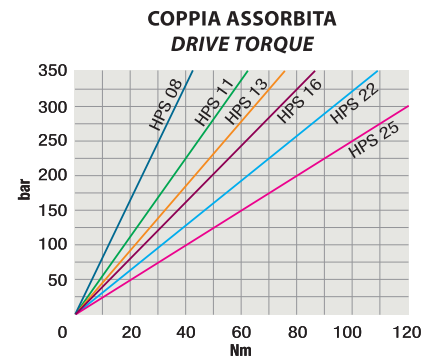
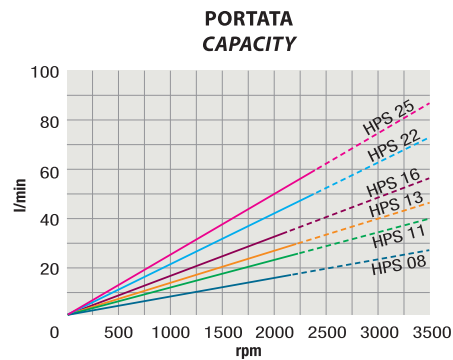
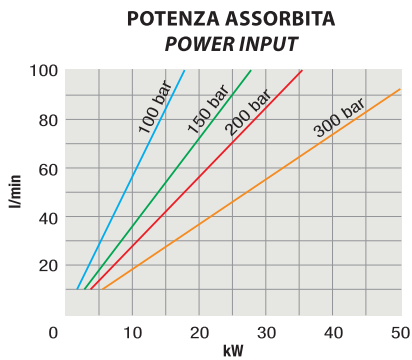
TIPO TYPE	CODICE / CODE		CILINDRATA DISPLACEMENT cm ³ /rev.	A mm	C ASPIRAZIONE INLET	D MANDATA OUTLET	PESO WEIGHT kg
	ROTAZIONE DESTRA CLOCKWISE ROT.	ROTAZIONE SINISTRA ANTICLOCKWISE ROT.					
HPS 08	20HPS008DSX000	20HPS008SSX000	8.3	124.7	3/4" G	1/2" G	3.6
HPS 11	20HPS011DSX000	20HPS011SSX000	11.5	129.9	3/4" G	1/2" G	3.8
HPS 13	20HPS013DSX000	20HPS013SSX000	13.5	135.0	3/4" G	1/2" G	4.2
HPS 16	20HPS016DSX000	20HPS016SSX000	16.4	139.4	3/4" G	1/2" G	4.4
HPS 22	20HPS022DSX000	20HPS022SSX000	20.5	145.8	3/4" G	1/2" G	4.8
HPS 25	20HPS025DSX000	20HPS025SSX000	25.3	149.4	3/4" G	1/2" G	5.0

KIT RASAMENTI / THRUST PLATES KIT COD. 20602200000000 - KIT GUARNIZIONI COMPLETO NBR (standard) / COMPLETE SEALS KIT NBR (standard) COD. 21904500000000

Per la scelta dei raccordi orientabili vedi pag. <?>-<?> / For the selection of adjustable fittings see page <?>-<?>

TIPO / TYPE			HPS 08	HPS 11	HPS 13	HPS 16	HPS 22	HPS 25
Cilindrata <i>Displacement</i>	Vg	cm ³ /n cm ³ /rev.	8.3	11.5	13.5	16.4	20.5	25.3
Pressione massima continua <i>Max continuous operating pressure</i>	P1	bar	280	280	280	280	260	240
Pressione massima intermittente <i>Max intermittent operating pressure</i>	(max 30 s) P2		310	310	310	300	280	260
Pressione massima di picco <i>Max peak pressure</i>	(≤ 0.1 s) P3		320	320	320	310	290	270
Velocità massima intermittente <i>Max intermittent speed</i>	(P ≤ 20 bar) n3	n/min r.p.m.	2700	2700	2700	2700	2700	2700
Velocità massima continua <i>Max continuous speed</i>	(≤ P1) n1		2200	2200	2200	2200	2000	2000
Velocità minima intermittente <i>Min intermittent speed</i>	(≤ P2 x 0.5) (max 30 s) n4		450	450	450	450	450	450

DIAGRAMMI / DIAGRAMS



RILIEVI ESEGUITI CON OLIO ISO VG 46 A 50° C ($\nu = 30$ cSt)
THE ABOVE SPECIFICATIONS REFER TO OIL TYPE ISO VG 46 AT 50° C ($\nu = 30$ cSt)

ROTAZIONE POMPA / PUMP ROTATION

