

1 ISO 14 (DIN 5462)

CODICE DI ORDINAZIONE / ORDERING CODE

20 FZO XXX X S X 0 0 0

0 = SINGOLA / SINGLE

ACCESSORI / ACCESSORIES
0 = NESSUNO / NONE

VARIANTI / VARIANTS
0 = NESSUNA / NONE

GUARNIZIONI / GASKETS
0 = NBR (standard)
H = HNBR (a richiesta / on request)
V = VITON (a richiesta / on request)

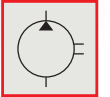
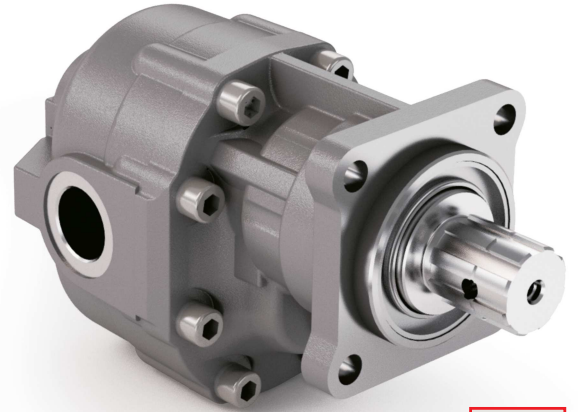
ALBERO / SHAFT
S = ISO 14 (DIN 5462)

ROTAZIONE / ROTATION
D = DESTRA / CLOCKWISE
S = SINISTRA / ANTICLOCKWISE

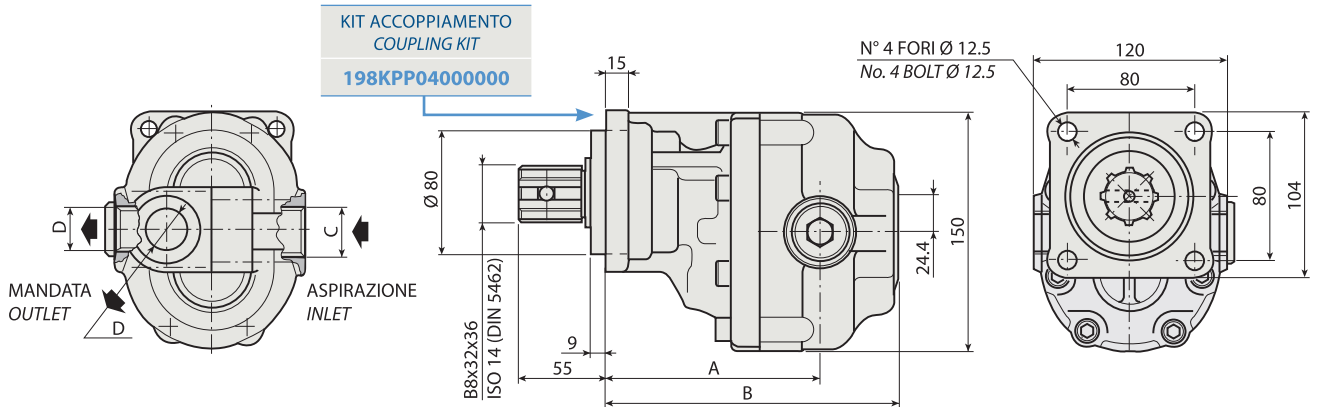
CILINDRATA / DISPLACEMENT

TIPO / TYPE

POMPA AD INGRANAGGI / GEAR PUMP



FZO 15	FZO 36	FZO 65
FZO 22	FZO 43	FZO 90
FZO 27	FZO 57	FZO 110



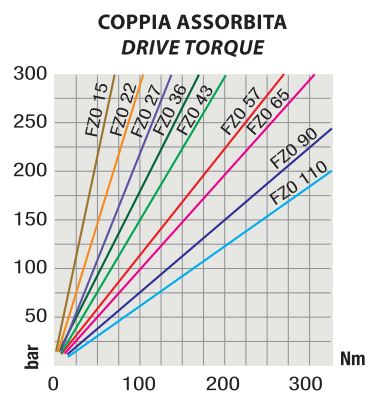
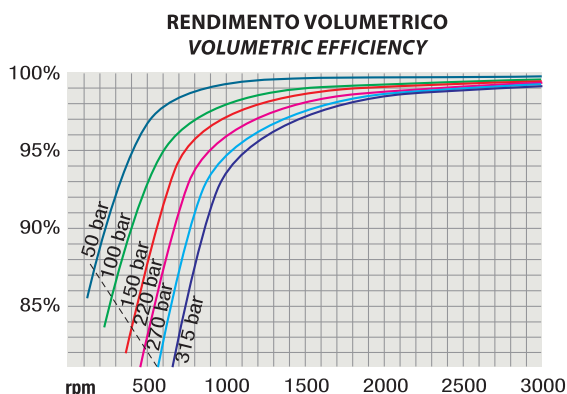
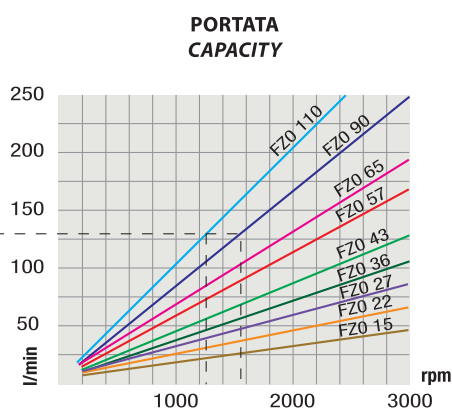
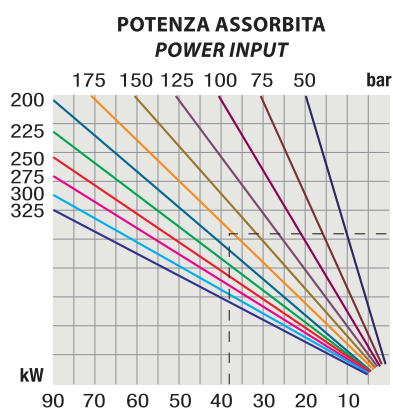
CARATTERISTICHE E DATI TECNICI / SPECIFICATIONS AND TECHNICAL DATA

TIPO TYPE	CODICE / CODE		CILINDRATA DISPLACEMENT cm ³ /rev.	A mm	B mm	C ASPIRAZIONE INLET	D MANDATA OUTLET	PESO WEIGHT kg
	ROTAZIONE DESTRA CLOCKWISE ROT.	ROTAZIONE SINISTRA ANTICLOCKWISE ROT.						
FZO 15	20FZ0015DSX000	20FZ0015SSX000	15	123.0	169.0	3/4" G	1/2" G	10.8
FZO 22	20FZ0022DSX000	20FZ0022SSX000	22	126.0	174.0	3/4" G	1/2" G	11.3
FZO 27	20FZ0027DSX000	20FZ0027SSX000	27	125.0	179.0	3/4" G	1/2" G	11.5
FZO 36	20FZ0036DSX000	20FZ0036SSX000	36	128.0	184.0	3/4" G	1/2" G	12.0
FZO 43	20FZ0043DSX000	20FZ0043SSX000	43	131.0	189.0	1" G	3/4" G	12.4
FZO 57	20FZ0057DSX000	20FZ0057SSX000	57	138.0	199.0	1" G	3/4" G	13.2
FZO 65	20FZ0065DSX000	20FZ0065SSX000	65	143.0	204.0	1" G	3/4" G	13.7
FZO 90	20FZ0090DSX000	20FZ0090SSX000	84	152.5	219.0	1" 1/4 G	1" G	14.7
FZO 110	20FZ0110DSX000	20FZ0110SSX000	105	164.5	231.0	1" 1/4 G	1" G	16.5

KIT RASAMENTI / THRUST PLATES KIT COD. 20601800000000 - KIT GUARNIZIONI COMPLETO NBR (standard) / COMPLETE SEALS KIT NBR (standard) COD. 21900900000000

Per la scelta dei raccordi orientabili vedi pag. <?>-<?> / For the selection of adjustable fittings see page <?>-<?>

TIPO / TYPE			FZO 15	FZO 22	FZO 27	FZO 36	FZO 43	FZO 57	FZO 65	FZO 90	FZO 110	
Cilindrata <i>Displacement</i>	Vg	cm ³ /n cm ³ /rev.	15	22	27	36	43	57	65	84	105	
Pressione massima continua <i>Max continuous operating pressure</i>	P1	bar	315	305	300	300	280	240	220	210	180	
Pressione massima intermittente <i>Max intermittent operating pressure</i>	(max 30 s)		P2	340	330	325	325	305	265	240	230	200
Pressione massima di picco <i>Max peak pressure</i>	(≤ 0.1 s)		P3	450	450	450	450	400	380	350	300	250
Velocità massima intermittente <i>Max intermittent speed</i>	(P ≤ 20 bar)	n3	4000	4000	3500	3500	3500	3500	3500	3500	3000	
Velocità massima continua <i>Max continuous speed</i>	(≤ P1)	n1	n/min r.p.m.	2500	2500	2200	2200	2200	2000	1800	1500	1500
Velocità minima intermittente <i>Min intermittent speed</i>	(≤ P2 x 0.5) (max 30 s)	n4	450	450	350	350	350	300	300	300	300	

DIAGRAMMI / DIAGRAMS


RILIEVI ESEGUITI CON OLIO ISO VG 46 A 50° C ($\nu = 30$ cSt)
 THE ABOVE SPECIFICATIONS REFER TO OIL TYPE ISO VG 46 AT 50° C ($\nu = 30$ cSt)