

## 21 UNI 222

CODICE DI ORDINAZIONE / ORDERING CODE

# 20 FZO XXX X 0 X 0 0 0

0 = SINGOLA / SINGLE

ACCESSORI / ACCESSORIES  
0 = NESSUNO / NONE

VARIANTI / VARIANTS  
0 = NESSUNA / NONE

GUARNIZIONI / GASKETS  
0 = NBR (standard)  
H = HNBR (a richiesta / on request)  
V = VITON (a richiesta / on request)

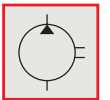
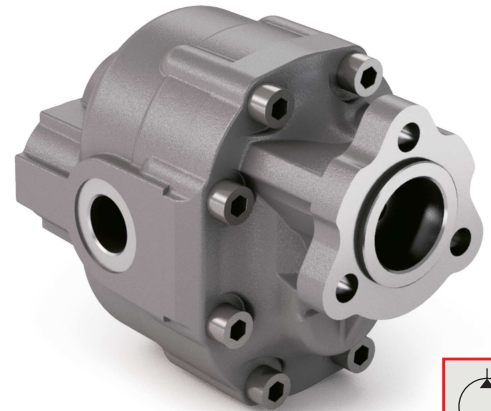
ALBERO / SHAFT  
0 = 21 UNI 222

ROTAZIONE / ROTATION  
D = DESTRA / CLOCKWISE  
S = SINISTRA / ANTICLOCKWISE

CILINDRATA / DISPLACEMENT

TIPO / TYPE

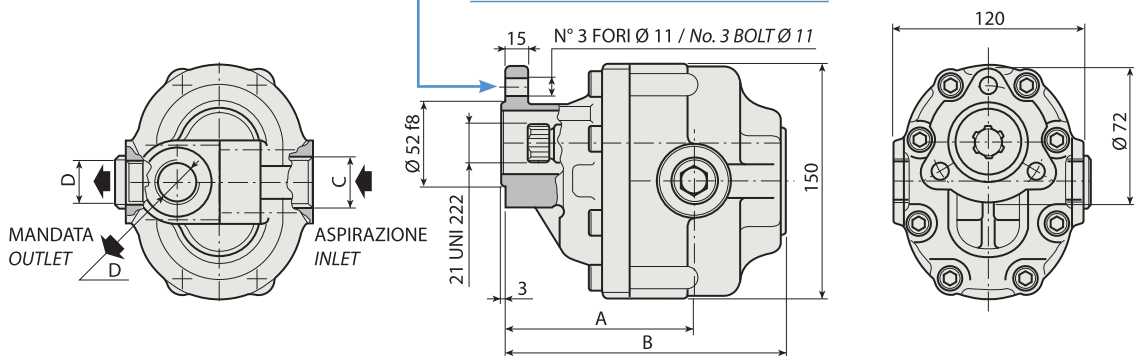
POMPA AD INGRANAGGI / GEAR PUMP



<b>FZO 15</b>	<b>FZO 36</b>	<b>FZO 65</b>
<b>FZO 22</b>	<b>FZO 43</b>	<b>FZO 90</b>
<b>FZO 27</b>	<b>FZO 57</b>	<b>FZO 110</b>

KIT ACCOPPIAMENTO POMPA UNI/PTO UNI  
COUPLING KIT UNI PUMP/UNI PTO

198KPP02000000



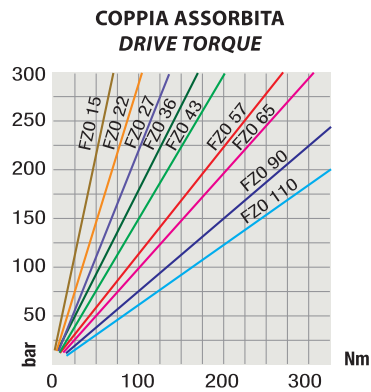
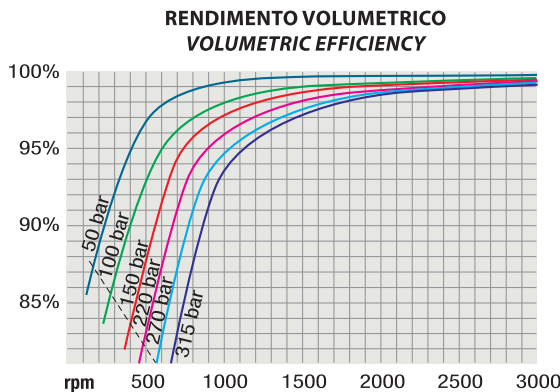
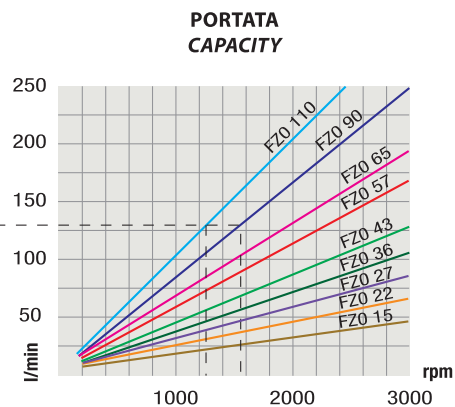
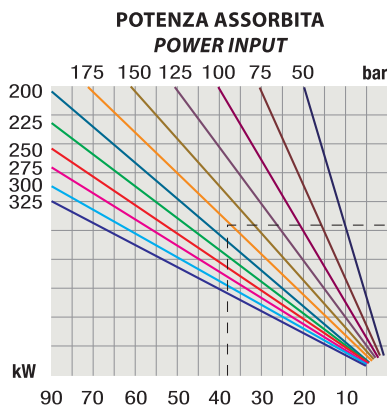
### CARATTERISTICHE E DATI TECNICI / SPECIFICATIONS AND TECHNICAL DATA

TIPO TYPE	CODICE / CODE		CILINDRATA DISPLACEMENT cm <sup>3</sup> /rev.	A mm	B mm	C ASPIRAZIONE INLET	D MANDATA OUTLET	PESO WEIGHT kg
	ROTAZIONE DESTRA CLOCKWISE ROT.	ROTAZIONE SINISTRA ANTICLOCKWISE ROT.						
<b>FZO 15</b>	<b>20FZ0015D0X000</b>	<b>20FZ0015S0X000</b>	15	96.5	142.5	3/4" G	1/2" G	8.4
<b>FZO 22</b>	<b>20FZ0022D0X000</b>	<b>20FZ0022S0X000</b>	22	101.5	147.5	3/4" G	1/2" G	8.9
<b>FZO 27</b>	<b>20FZ0027D0X000</b>	<b>20FZ0027S0X000</b>	27	101.5	148.5	3/4" G	1/2" G	9.0
<b>FZO 36</b>	<b>20FZ0036D0X000</b>	<b>20FZ0036S0X000</b>	36	99.5	157.5	3/4" G	1/2" G	9.1
<b>FZO 43</b>	<b>20FZ0043D0X000</b>	<b>20FZ0043S0X000</b>	43	104.5	162.5	1" G	3/4" G	10.2
<b>FZO 57</b>	<b>20FZ0057D0X000</b>	<b>20FZ0057S0X000</b>	57	111.5	172.5	1" G	3/4" G	11.1
<b>FZO 65</b>	<b>20FZ0065D0X000</b>	<b>20FZ0065S0X000</b>	65	116.5	177.5	1" G	3/4" G	11.5
<b>FZO 90</b>	<b>20FZ0090D0X000</b>	<b>20FZ0090S0X000</b>	84	126.0	192.5	1" 1/4 G	1" G	12.6
<b>FZO 110</b>	<b>20FZ0110D0X000</b>	<b>20FZ0110S0X000</b>	105	138.0	204.5	1" 1/4 G	1" G	13.7

KIT RASAMENTI / THRUST PLATES KIT COD. 20601800000000 - KIT GUARNIZIONI COMPLETO NBR (standard) / COMPLETE SEALS KIT NBR (standard) COD. 21901000000000

Per la scelta dei raccordi orientabili vedi pag. <?>-<?> / For the selection of adjustable fittings see page <?>-<?>

TIPO / TYPE			FZO 15	FZO 22	FZO 27	FZO 36	FZO 43	FZO 57	FZO 65	FZO 90	FZO 110
Cilindrata <i>Displacement</i>	Vg	cm <sup>3</sup> /n cm <sup>3</sup> /rev.	15	22	27	36	43	57	65	84	105
Pressione massima continua <i>Max continuous operating pressure</i>	P1	bar	315	305	300	300	280	240	220	210	180
Pressione massima intermittente <i>Max intermittent operating pressure</i>	(max 30 s) P2		340	330	325	325	305	265	240	230	200
Pressione massima di picco <i>Max peak pressure</i>	(≤ 0.1 s) P3		450	450	450	450	400	380	350	300	250
Velocità massima intermittente <i>Max intermittent speed</i>	(P ≤ 20 bar) n3	n/min r.p.m.	4000	4000	3500	3500	3500	3500	3500	3500	3000
Velocità massima continua <i>Max continuous speed</i>	(≤ P1) n1		2500	2500	2200	2200	2200	2000	1800	1500	1500
Velocità minima intermittente <i>Min intermittent speed</i>	(≤ P2 x 0.5) (max 30 s) n4		450	450	350	350	350	300	300	300	300

**DIAGRAMMI / DIAGRAMS**


RILIEVI ESEGUITI CON OLIO ISO VG 46 A 50° C ( $\nu = 30 \text{ cSt}$ )  
 THE ABOVE SPECIFICATIONS REFER TO OIL TYPE ISO VG 46 AT 50° C ( $\nu = 30 \text{ cSt}$ )