

1 DIN 5482

CODICE DI ORDINAZIONE / ORDERING CODE

20 DAB XXX X 4 0 0 2 0

0 = SINGOLA / SINGLE

VERSIONI / VERSIONS
2 = GRUPPO POMPA (DAB 2)
PUMP GROUP (DAB 2)

VARIANTE / VARIANT
0 = NESSUNA / NONE

GUARNIZIONI / GASKETS
0 = NBR

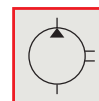
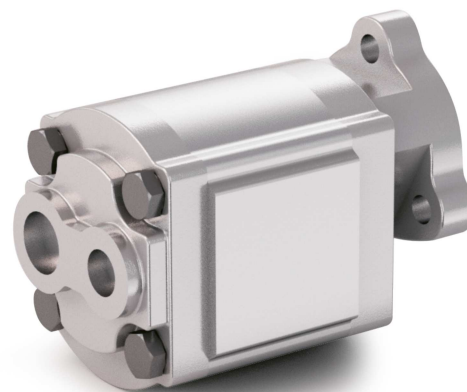
ALBERO / SHAFT
4 = DIN 5482

ROTAZIONE / ROTATION
D = DESTRA / CLOCKWISE
S = SINISTRA / ANTICLOCKWISE

CILINDRATA / DISPLACEMENT

TIPO / TYPE

POMPA AD INGRANAGGI / GEAR PUMP



DAB 10

DAB 25

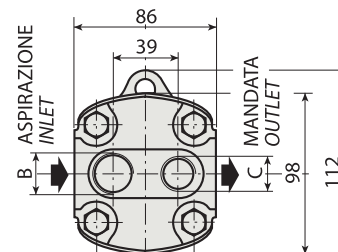
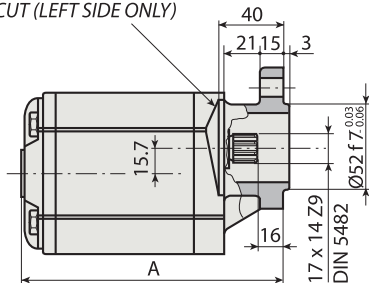
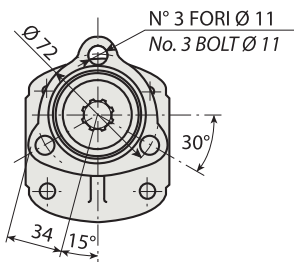
DAB 15

DAB 36

KIT DI MONTAGGIO / MOUNTING KIT

198KPP17000000

SCARICO INGOMBRO (SOLO LATO SIN.)
UNDERCUT (LEFT SIDE ONLY)



CARATTERISTICHE E DATI TECNICI / SPECIFICATIONS AND TECHNICAL DATA

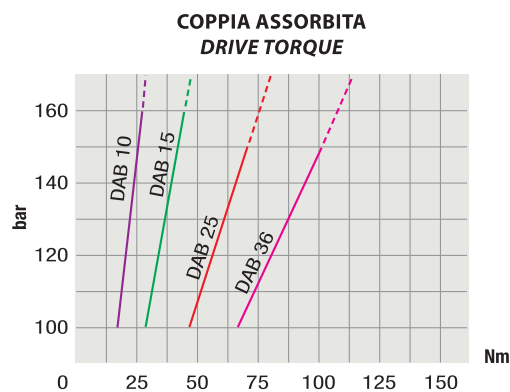
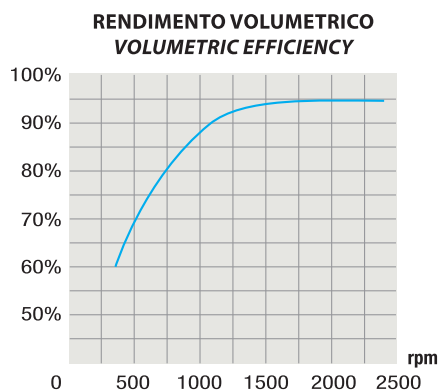
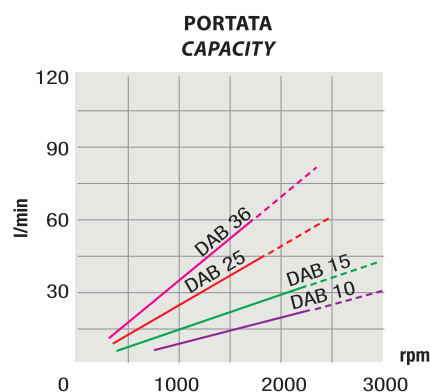
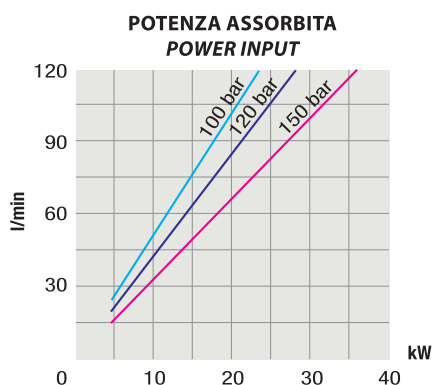
TIPO TYPE	CODICE / CODE		CILINDRATA DISPLACEMENT cm ³ /rev.	A mm	B ASPIRAZIONE INLET	C MANDATA OUTLET	PESO WEIGHT kg
	ROTAZIONE DESTRA CLOCKWISE ROT.	ROTAZIONE SINISTRA ANTICLOCKWISE ROT.					
DAB 10	20DAB010D40020	20DAB010S40020	10	139.0	3/4" G	1/2" G	2.7
DAB 15	20DAB015D40020	20DAB015S40020	15	148.0	3/4" G	1/2" G	3.0
DAB 25	20DAB025D40020	20DAB025S40020	25	164.5	3/4" G	1/2" G	3.2
DAB 36	20DAB036D40020	20DAB036S40020	35	181.5	3/4" G	1/2" G	3.7

KIT RASAMENTI / THRUST PLATES KIT COD. 20602300000000

KIT GUARNIZIONI COMPLETO / COMPLETE SEALS KIT COD. 21902500000000

Per la scelta dei raccordi orientabili vedi pag. <?>-<?> / For the selection of adjustable fittings see page <?>-<?>

TIPO / TYPE		DAB 10	DAB 15	DAB 25	DAB 36
Cilindrata <i>Displacement</i>	Vg cm ³ /n cm ³ /rev.	10	15	25	35
Pressione massima continua <i>Max continuous operating pressure</i>	P1	180	140	120	100
Pressione massima intermittente <i>Max intermittent operating pressure</i>	(max 30 s) P2	200	160	150	120
Pressione massima di picco <i>Max peak pressure</i>	(≤ 0.1 s) P3	270	210	180	150
Velocità massima intermittente <i>Max intermittent speed</i>	(P ≤ 20 bar) n3	3000	3000	2500	2100
Velocità massima continua <i>Max continuous speed</i>	(≤ P1) n1	1500	1500	1500	1400
Velocità minima intermittente <i>Min intermittent speed</i>	(≤ P2 x 0.5) (max 30 s) n4	800	650	650	600

DIAGRAMMI / DIAGRAMS

 RILIEVI ESEGUITI CON OLIO ISO VG 46 A 50° C ($\nu = 30$ cSt)

 THE ABOVE SPECIFICATIONS REFER TO OIL TYPE ISO VG 46 AT 50° C ($\nu = 30$ cSt)