

VALVOLA DI FINE CORSA  
END-OF-STROKE VALVE

CODICE DI ORDINAZIONE / ORDERING CODE

## 3 VFCR 2T XXXX

MODELLO / MODEL  
ACCESSORI / ACCESSORIES

0600 = 60 l/min ATTACCHI DA 3/8" GAS / GAUGE 3/8" G  
0800 = 80 l/min ATTACCHI DA 1/2" GAS / GAUGE 1/2" G  
1200 = 120 l/min ATTACCHI DA 3/4" GAS / GAUGE 3/4" G  
2000 = 200 l/min ATTACCHI DA 1" GAS / GAUGE 1" G  
2500 = 250 l/min ATTACCHI DA 1" 1/4 GAS / GAUGE 1" 1/4 G



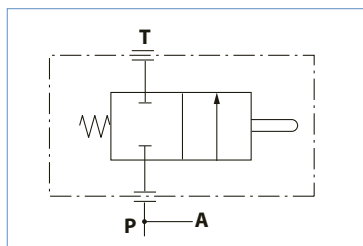
<b>2T 60</b>	<b>2T 120</b>	<b>2T 250</b>
<b>2T 80</b>	<b>2T 200</b>	

5

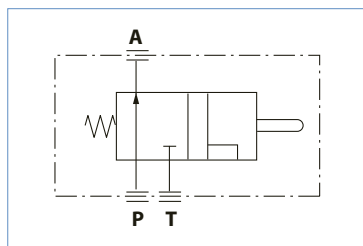
CARATTERISTICHE TECNICHE / TECHNICAL SPECIFICATIONS

Portata nominale Flow rate	60 - 80 - 120 - 200 - 250 l/min	Campo °C (t) Range °C (t)	-25° + 80°C
Pressione massima di lavoro Max working pressure	350 bar	Campo viscosità Viscosity range	12-100 cSt
Pressione massima di picco (<0.1 s) Max peak pressure	500 bar	Filtrazione / Filtering ISO 4406 βx=75	20/17 25 μm
Fluido olio minerale Mineral oil	HLP (DIN 5152S)	Peso Weight	1.7 - 1.7 - 2.2 - 3.7 - 6.1 kg

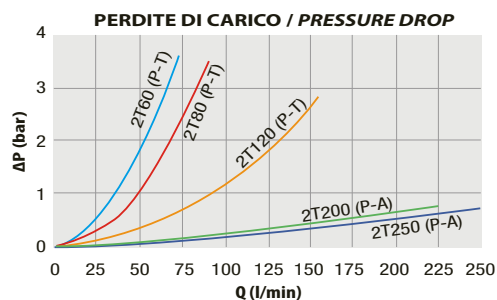
- Valvola di fine corsa a due posizioni, a comando meccanico (tramite tirante) per veicoli ribaltabili.
- I mod. 60 - 80 - 120 mettono a scarico il flusso senza bloccare il cilindro. Si installano in derivazione.
- Anche i modelli 200 - 250 mettono a scarico il flusso senza bloccare il cilindro ma vanno installati sulla linea di mandata.
- Flangiabile a telaio.
- Disponibili varie portate nominali.
- Two position mechanically operated end-stroke valve for tipper vehicle (trailer).
- Models 60 - 80 - 120 send the oil flow to the tank without holding the cylinder. Offtake mounting.
- Models 200 - 250 send the oil flow to the tank without holding the cylinder too, but they need on-line mounting.
- Flange connection to chassis.
- Several flow rate models are available.



mod. VFCR 2T 60 - 80 - 120

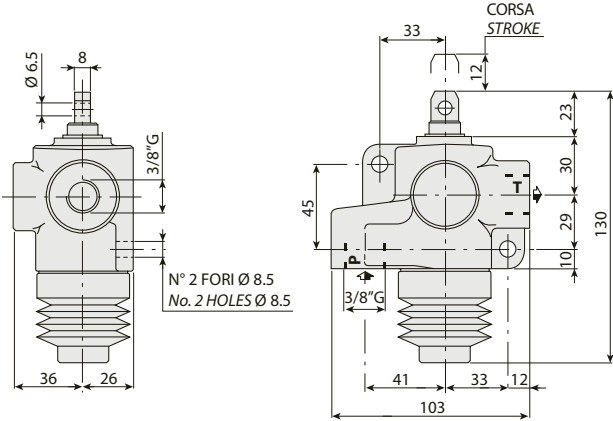


mod. VFCR 2T 200 - 250

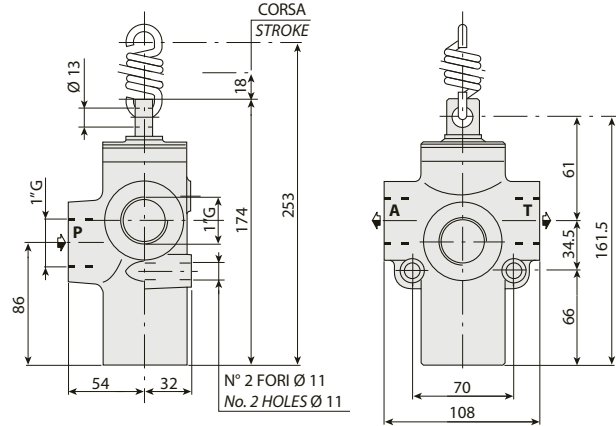


RILIEVI ESEGUITI CON OLIO ISO VG 46 A 50° C (ν = 30 cSt)  
THE ABOVE SPECIFICATIONS REFER TO OIL TYPE ISO VG 46 AT 50° C (ν = 30 cSt)

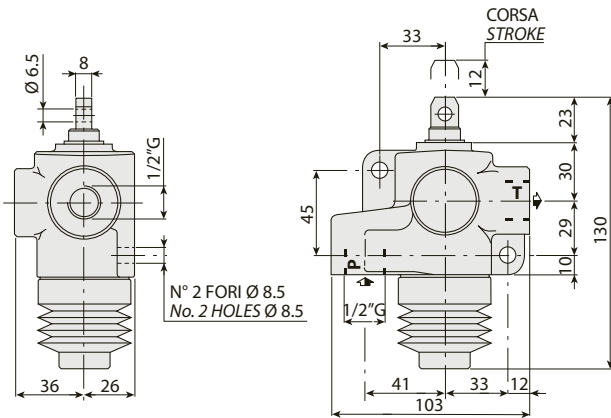
mod. 2T 60



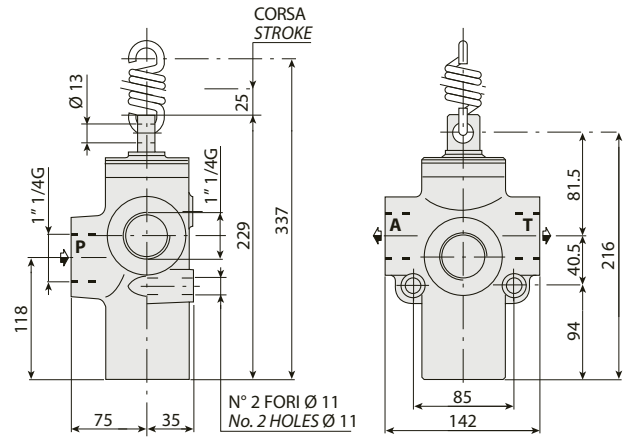
mod. 2T 200



mod. 2T 80

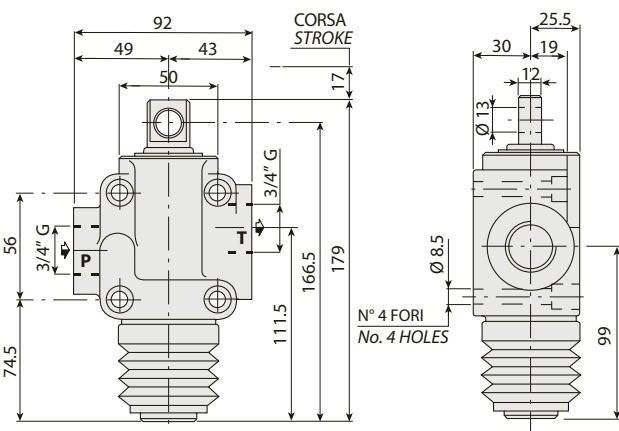


mod. 2T 250



5

mod. 2T 120



ESEMPIO DI INSTALLAZIONE / INSTALLATION EXAMPLE

