

**VALVOLA APERTURA SEQUENZIALE**  
*SEQUENTIAL OPENING VALVE*

**VALVOLA PNEUMATICA**  
*PNEUMATICAL VALVE*

**NEW**

CODICE DI ORDINAZIONE / ORDERING CODE

**3 VAS 200 P X 00**

00 = NESSUN OPTIONAL / NO OPTIONALS

VERSIONI / VERSIONS

S = CON VALVOLA DI SEQUENZA / WITH SEQUENCE VALVE

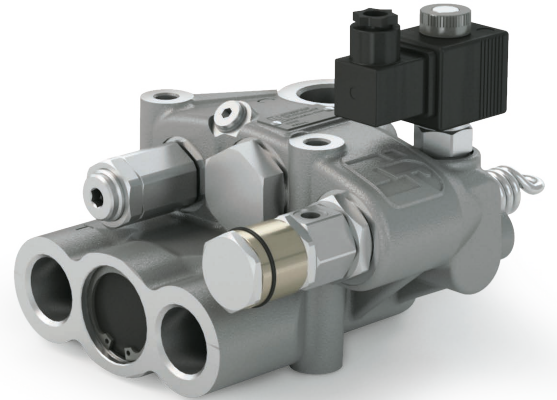
C = CON ELETTROVALVOLA E VALVOLA DI SEQUENZA  
WITH SOLENOID VALVE AND SEQUENCE VALVE

P = VALVOLA PNEUMATICA / PNEUMATICAL VALVE

L/MIN (PORTATA/FLOW)

VALVOLA APERTURA SEQUENZIALE / SEQUENTIAL OPENING VALVE

ACCESSORI / ACCESSORIES



**5**

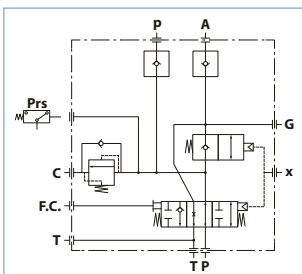
CARATTERISTICHE TECNICHE / TECHNICAL SPECIFICATIONS

Portata nominale <i>Flow rate</i>	200 l/min	Temperatura fluido °C (t) <i>Fluid temperature °C (t)</i>	-25° + 80°C
Pressione massima di lavoro <i>Max working pressure</i>	250 bar	Campo viscosità <i>Viscosity range</i>	12-100 cSt
Pressione massima di picco (<0.1 s) <i>Max peak pressure</i>	300 bar	Filtrazione / Filtering ISO 4406 βx=75	20/17 25 μm
Fluido olio minerale <i>Mineral oil</i>	ISO VG 46	Peso <i>Weight</i>	10.4 kg

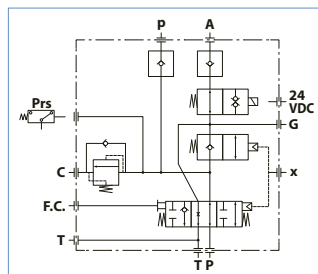
- Valvola di controllo del flusso a tre posizioni per veicoli ribaltabili per impianti a due tubi.
- Valvola di fine corsa a comando meccanico (tramite tirante).
- Valvola di controllo direzione incorporata.
- Flangiabile a telaio.
- Pressostato a richiesta.

- Three-position flow control valve for tipper vehicles equipped with two-pipe wet kit hydraulic system.
- Mechanical end-of-stroke valve (through cable).
- Built-in directional control valve.
- Flange connection to chassis.
- Pressure switch upon request.

PRESSOSTATO PREDISPOSTO DI SERIE  
STANDARD PRESSURE SWITCH



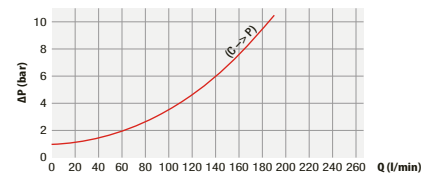
mod. 3VAS 200P S



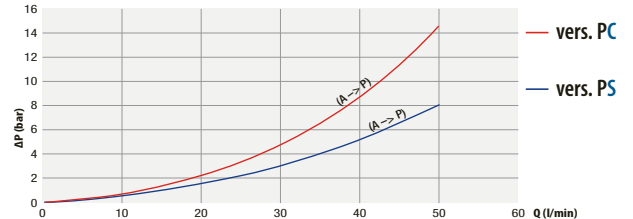
mod. 3VAS 200P C

RILIEVI ESEGUITI CON OLIO ISO VG 46 A 50° C (ν=30 cSt)  
THE ABOVE SPECIFICATIONS REFER TO OIL TYPE ISO VG 46 AT 50° C (ν=30 cSt)

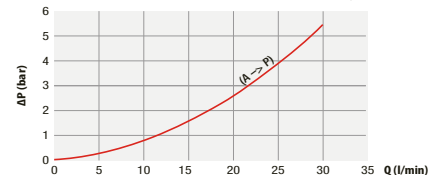
CHIUSURA UTENZA PRINCIPALE / MAIN UTILISATION CLOSURE



PRESSIONE ARIA IN VALVOLA DI CONTROLLO DIREZIONE (chiusura sponda)  
AIR PRESSURE DIRECTIONAL CONTROL VALVE (board closing)



ASSENZA PRESSIONE ARIA IN VALVOLA DI CONTROLLO DIREZIONE  
(chiusura ganci di sicurezza)  
NO AIR PRESSURE DIRECTIONAL CONTROL VALVE (body clamps closing)

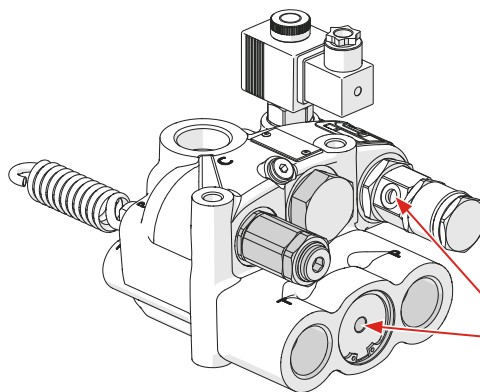
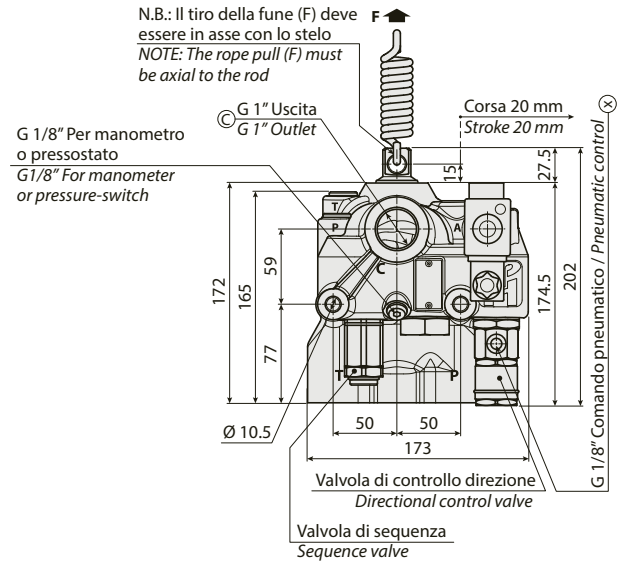
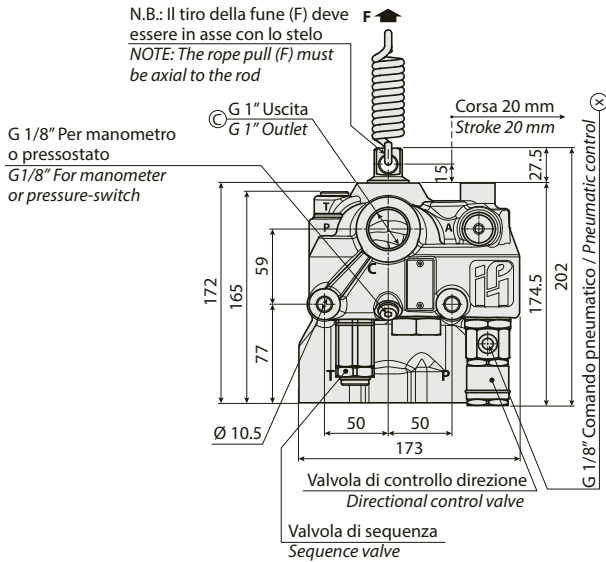
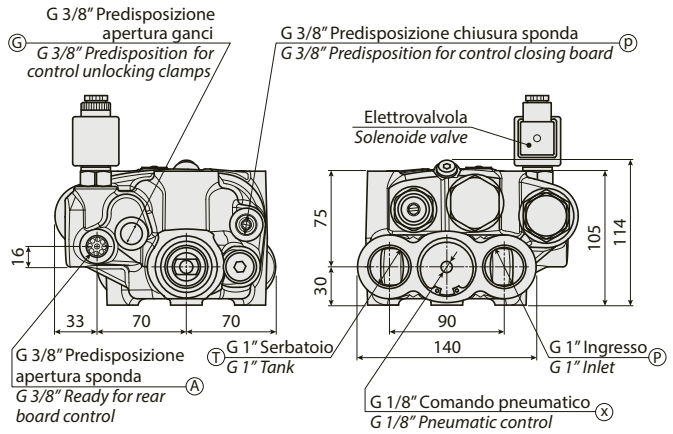
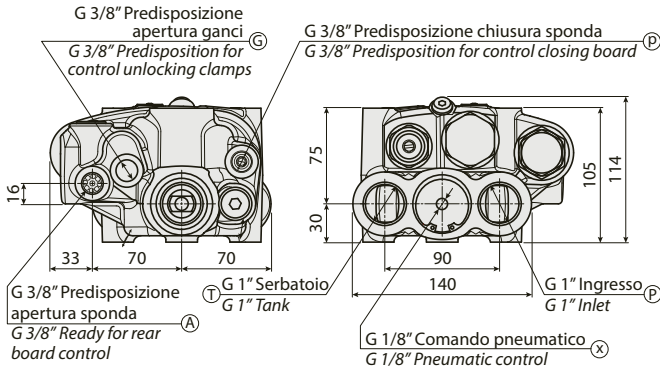


VALVOLA PNEUMATICA  
PNEUMATICAL VALVE

VALVOLA APERTURA SEQUENZIALE  
SEQUENTIAL OPENING VALVE

VERSIONE CON VALVOLA DI SEQUENZA  
WITH SEQUENCE VALVE

VERSIONE CON ELETTROVALVOLA E VALVOLA DI SEQUENZA  
WITH SOLENOID VALVE AND SEQUENCE VALVE



**ATTENZIONE:**  
i due attacchi G 1/8" devono ricevere il segnale pneumatico contemporaneamente  
**WARNING:**  
The two G 1/8" ports must be pneumatically operated simultaneously

PRESSOSTATO A RICHIESTA / UPON REQUEST PRESSURE SWITCH



Coppia di serraggio:  
Tightening torque: 30 ± 5 Nm

Pressostato 3 bar per pressioni di lavoro < 160 bar Pressure switch at 3 bar for working pressure < 160 bar	COD. 501PRS163A1
Pressostato 7 bar per pressioni di lavoro > 160 bar Pressure switch at 7 bar for working pressure > 160 bar	COD. 501PRS357A1