

VALVOLA APERTURA SEQUENZIALE
SEQUENTIAL OPENING VALVE

VALVOLA MECCANICA
MECHANICAL VALVE

NEW

CODICE DI ORDINAZIONE / ORDERING CODE

3 VAS 200 M X 00

00 = NESSUN OPTIONAL / NO OPTIONALS

VERSIONI / VERSIONS

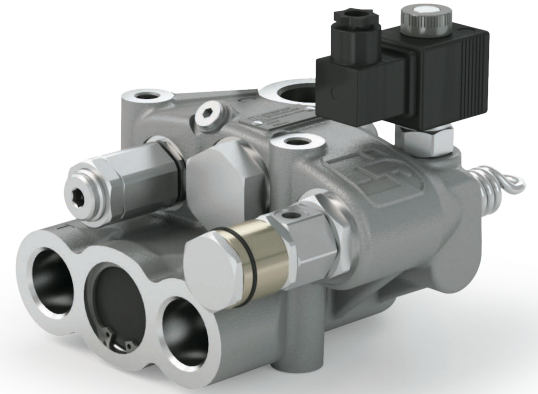
- O = STANDARD / STANDARD
- E = CON ELETTROVALVOLA / WITH SOLENOID VALVE
- S = CON VALVOLA DI SEQUENZA / WITH SEQUENCE VALVE
- C = CON ELETTROVALVOLA E VALVOLA DI SEQUENZA
WITH SOLENOID VALVE AND SEQUENCE VALVE

M = VALVOLA MECCANICA / MECHANICAL VALVE

L/MIN (PORTATA/FLOW)

VALVOLA APERTURA SEQUENZIALE / SEQUENTIAL OPENING VALVE

ACCESSORI / ACCESSORIES



5

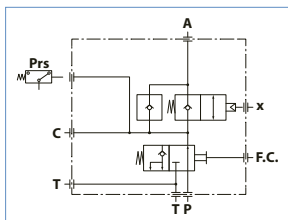
CARATTERISTICHE TECNICHE / TECHNICAL SPECIFICATIONS

Portata nominale <i>Flow rate</i>	200 l/min	Temperatura fluido °C (t) <i>Fluid temperature °C (t)</i>	-25° + 80°C
Pressione massima di lavoro <i>Max working pressure</i>	250 bar	Campo viscosità <i>Viscosity range</i>	12-100 cSt
Pressione massima di picco (<0.1 s) <i>Max peak pressure</i>	300 bar	Filtrazione / Filtering ISO 4406 βx=75	20/17 25 μm
Fluido olio minerale <i>Mineral oil</i>	ISO VG 46	Peso <i>Weight</i>	9.6 kg

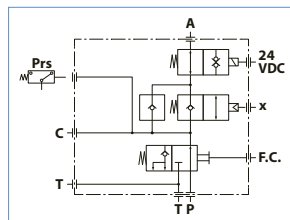
- Valvola di fine corsa a due posizioni a comando meccanico (tramite tirante) per veicoli ribaltabili per impianti a un tubo o a due tubi.
- Valvola di controllo direzione incorporata.
- Flangiabile a telaio.
- Pressostato a richiesta.

- Mechanical two-way end-of-stroke valve (through cable) for tipping vehicles for one-pipe or two-pipe systems.
- Built-in directional control valve.
- Flange connection to chassis.
- Pressure switch upon request.

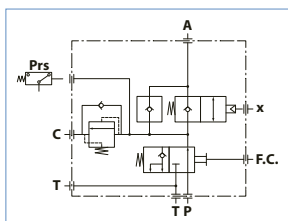
PRESSOSTATO PREDISPOSTO DI SERIE
STANDARD PRESSURE SWITCH



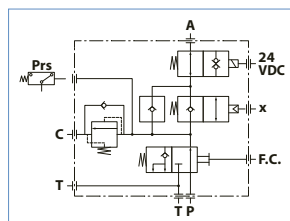
mod. 3VAS 200M 0



mod. 3VAS 200M E



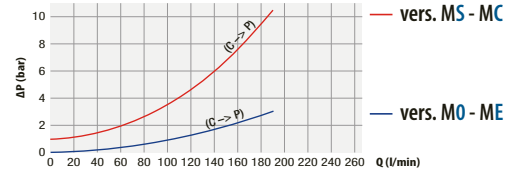
mod. 3VAS 200M S



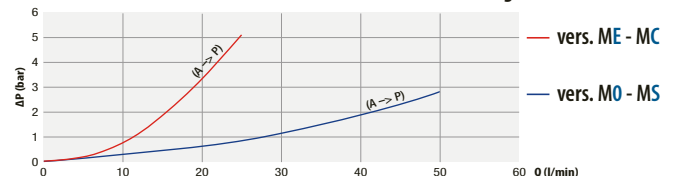
mod. 3VAS 200M C

RILIEVI ESEGUITI
CON OLIO ISO VG 46
A 50° C (ν = 30 cSt)
THE ABOVE SPECIFICATIONS
REFER TO OIL TYPE ISO VG 46
AT 50° C (ν = 30 cSt)

CHIUSURA UTENZA PRINCIPALE / MAIN UTILISATION CLOSURE



PRESSIONE ARIA IN VALVOLA DI CONTROLLO DIREZIONE (chiusura sponda)
AIR PRESSURE DIRECTIONAL CONTROL VALVE (board closing)



ASSENZA PRESSIONE ARIA IN VALVOLA DI CONTROLLO DIREZIONE
(chiusura ganci di sicurezza)
NO AIR PRESSURE DIRECTIONAL CONTROL VALVE (body clamps closing)

