

CENTINA
TRAILER'S ROOF LIFTING

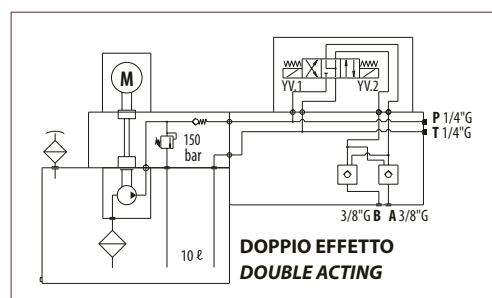
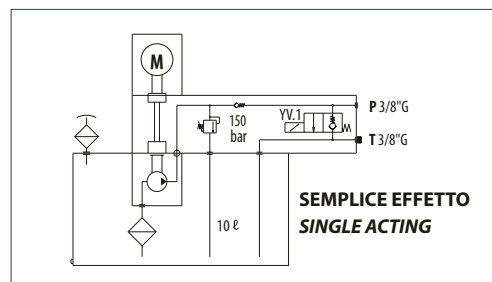
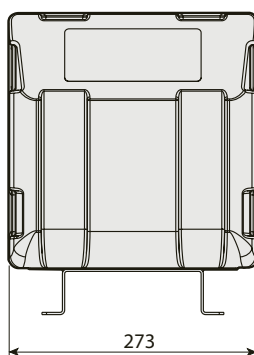
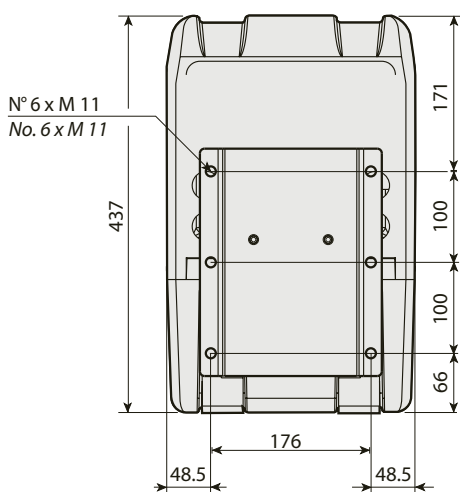


PER CENTINE A SINGOLO O DOPPIO EFFETTO
FOR SIMPLE ACTING/DOUBLE ACTING TRUCK TRAILER'S
ROOF LIFTING



10

MINICENTRALE COMPACT
MINI POWER PACK



CARATTERISTICHE E DATI TECNICI / SPECIFICATIONS AND TECHNICAL DATA

CODICE CODE	DESCRIZIONE DESCRIPTION
60C10G24SEH	Minicentrale 24 V per centina a semplice effetto 24 V single acting power pack
60C10G24DEH	Minicentrale 24 V per centina a doppio effetto 24 V double acting power pack

- Minicentrale con motore CC da 24 V 2000 W S3*, completo di termocoppia e teleruttore da 200 A.
 - Serbatoio da 10 litri in termoplast con cuffia e supporto di montaggio.
 - Cilindrata pompa da 2.5 cc. La pressione massima ottenibile è di 300 bar.
 - Fornita con presa per collegamento pulsantiera o radiocomando.
 - * Altre tensioni disponibili a richiesta.
- Mini power pack with 24 V 2000 W S3 DC motor*, completed of thermocouple and starting relay 200 A.
 - With 10 lt termoplast plastic tank and mounting support.
 - Pump displacement from 2.5 cm³. Max. pressure available is 300 bar.
 - Completed with plug for remote and radio control.
 - * Other voltages available on request.

ACCESSORI / ACCESSORIES



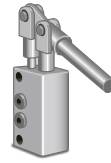
Cod. AC78VCOMM0H

Commutatore a chiave.
On-off switch.



Cod. AC151CIC02H

Cicalino con staffa e pressostato cablato 2 m.
Buzzer with bracket and pressure switch, 2 m wiring.

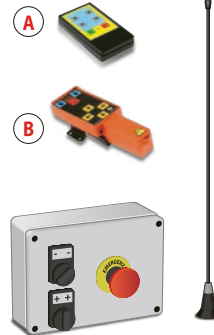


Cod. AC34ZKEMESH Cod. AC34ZKEME0H

Semplice effetto
Single acting

Doppio effetto
Double acting

Kit pompa a mano di emergenza 8cc/ciclo.
Emergency hand pump kit 8cc/cycle.

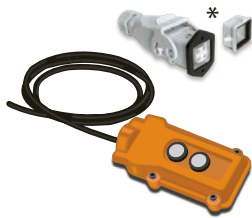


A Cod. AC62KR2CR0H

Telecomando standard
Standard remote control

B Cod. AC62KR2CH0H

Telecomando ergonomico
Ergonomic remote control



Cod. AC150EPES4H Cod. AC150EPES7H
cavo 4 m cavo 7 m
4 m wiring 7 m wiring

Pulsantiera a due pulsanti EPE.
2-keys EPE remote control.



Cod. AC150PLMS7H

Pulsantiera con cavo lineare 7.5 m.
Remote control with 7.5 m linear wiring.



Cod. AC150PSMS5H

Pulsantiera con cavo lineare (5 m) + spiraleto (0.5 m).
Remote control with linear (5 m) + twisted (0.5 m) wiring.

Kit radiocomando con pulsante di emergenza a 2 CH per doppio e singolo effetto.
Radio control 2 CH with emergency button for double acting and single acting.

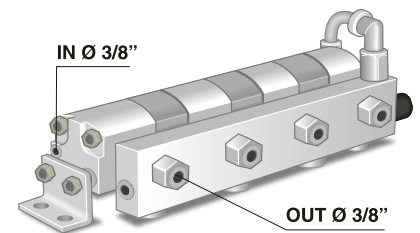
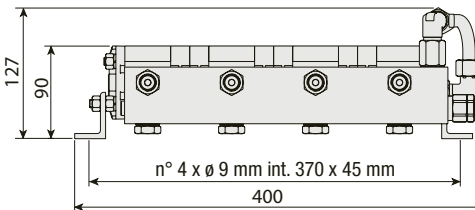
* A richiesta con connessione presa-spina, codice AC78MPRSP0H. / * Heavy duty plug-socket on request, code AC78MPRSP0H.

10

DIVISORE DI FLUSSO / FLOW DIVIDER
Cod. AC071DS416H

Divisore di flusso a 4 stadi, provvisto di valvole di azzeramento, scarico in mandata e raccordi a 90°, consente l'adeguato apporto d'olio e la giusta sincronia ai cilindri centina.

4 stages flow divider, with resetting valves and 90° fittings, is the perfect solution for truck trailer's roof lifting applications.



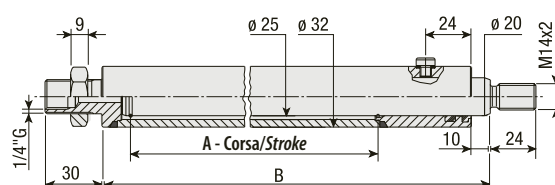
CILINDRI PER CENTINA
CYLINDERS FOR TRUCK TRAILER'S ROOF LIFTING

Cilindri tuffanti semplice effetto o a doppio effetto, progettati per veicoli centinati. A richiesta fornibili con clips di fissaggio D14 (cod. AC55FORM14H). Specificare quantità in fase di ordine.

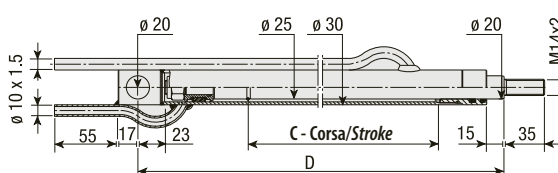
Simple acting and double acting cylinders for truck trailer's roof lifting applications. Fixing clip D14 (cod. AC55FORM14H) on request. Specify quantity when ordering.



SEMPLICE EFFETTO / SINGLE ACTING



DOPPIO EFFETTO / DOUBLE ACTING



CODICE CODE	A mm	B mm
AC45M07188H	600	674
AC45M07043H	800	874
AC45M07214H	1000	1074

CODICE CODE	C mm	D mm
AC45M91701H	800	950
AC45M91801H	1000	1150
AC45M91901H	1200	1350
AC45M92001H	1500	1650